

2013 Subregion 5 Master Plan and Sectional Map Amendment

Minor Amendments CR-62-2017

2013 Central Branch Avenue Corridor
Revitalization Sector Plan





Joint Base
Andrews

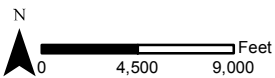
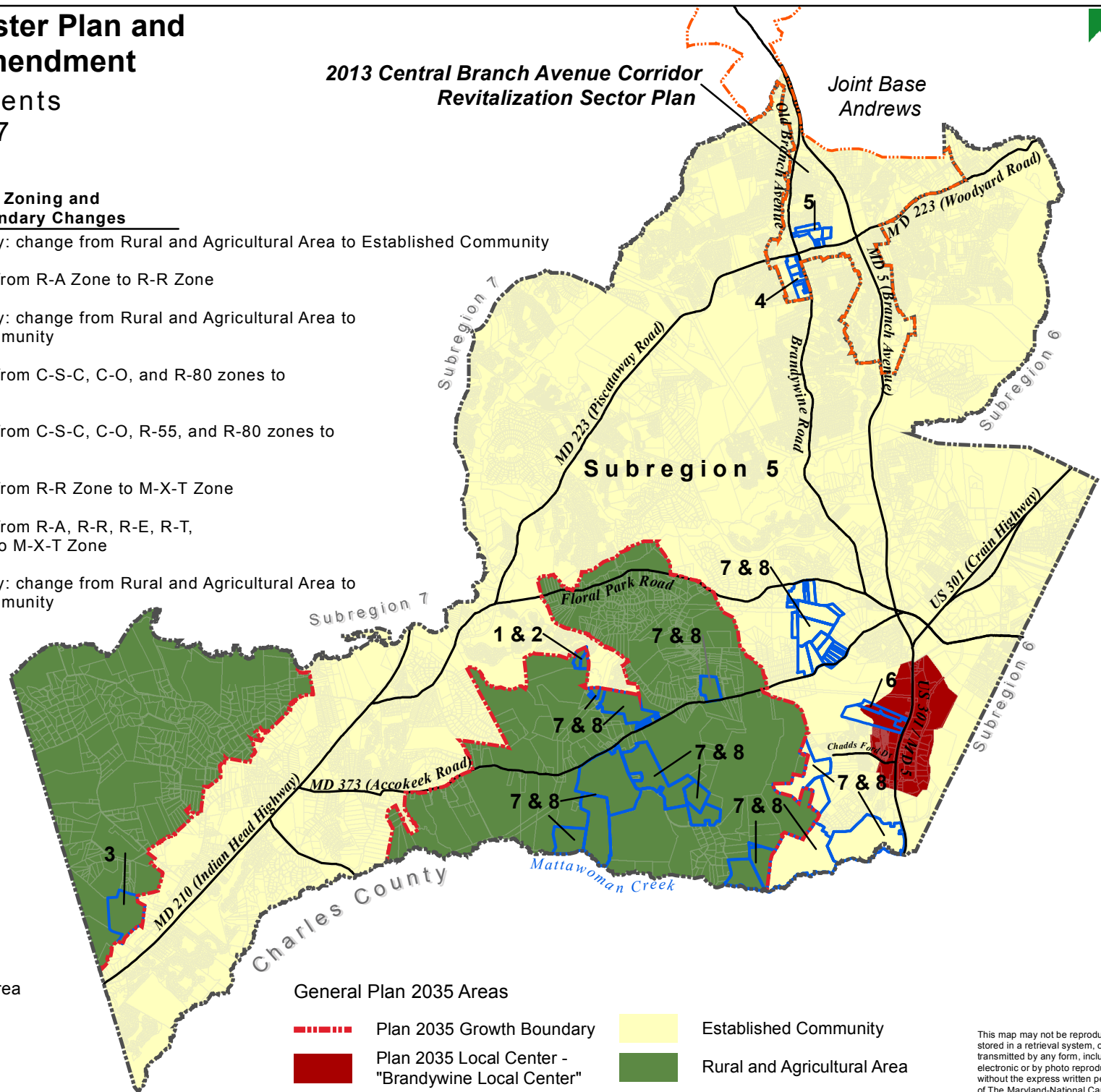
Minor Amendment Number	Proposed Zoning and Growth Boundary Changes
1	Growth Boundary: change from Rural and Agricultural Area to Established Community
2	Zoning: change from R-A Zone to R-R Zone
3	Growth Boundary: change from Rural and Agricultural Area to Established Community
4	Zoning: change from C-S-C, C-O, and R-80 zones to M-X-T Zone
5	Zoning: change from C-S-C, C-O, R-55, and R-80 zones to M-X-T Zone
6	Zoning: change from R-R Zone to M-X-T Zone
7	Zoning: change from R-A, R-R, R-E, R-T, and C-M zones to M-X-T Zone
8	Growth Boundary: change from Rural and Agricultural Area to Established Community

Legend

-  2013 Approved Subregion 5 Master Plan and Sectional Map Amendment Boundary
-  2013 Approved Central Branch Avenue Corridor Revitalization Sector Plan Boundary
-  Proposed Minor Amendment Area
-  Property Boundary
-  Major Roads

General Plan 2035 Areas

-  Plan 2035 Growth Boundary
-  Plan 2035 Local Center - "Brandywine Local Center"
-  Established Community
-  Rural and Agricultural Area



This map may not be reproduced, stored in a retrieval system, or transmitted by any form, including electronic or by photo reproduction, without the express written permission of The Maryland-National Capital Park and Planning Commission. For more information, contact the Prince George's County Planning Department in Upper Marlboro, Maryland.